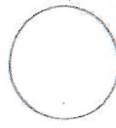




5400 Peachtree Dunwoody Rd.
Atlanta, GA 30328
www.kimley-horn.com

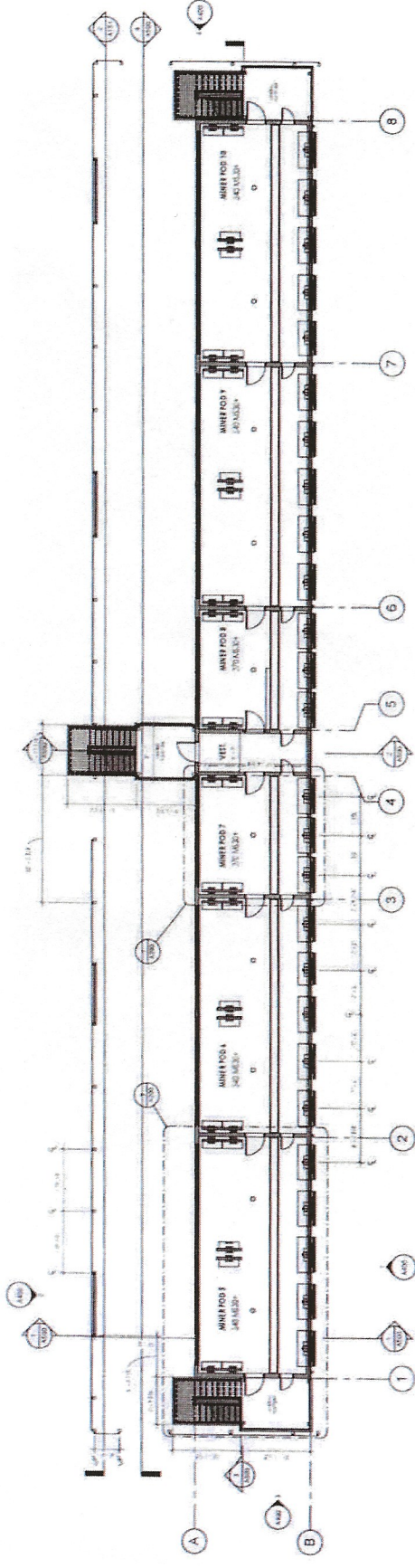
NORTHERN DATA PHASE III

121 Industrial Drive Maysville, GA 30558

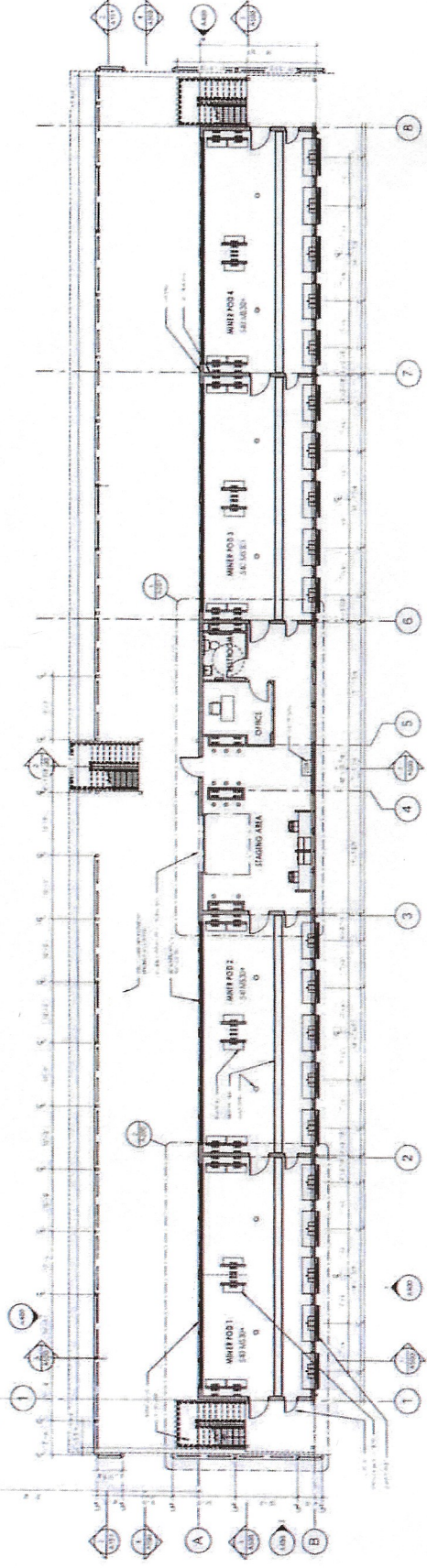


#	Rev	Date

Sheet No. **A100**



2700 MS30 • MINERS @ LEVEL 2



2140 MS30 • MINERS @ LEVEL 1



L&K ENGINEERING, INC.
41 W. Peachtree St. NE, Suite 300
Atlanta, GA 30308
www.lkeng.com // 404.525.2222

NORTHERN DATA PHASE III 121 Industrial Drive Maysville, GA 30558

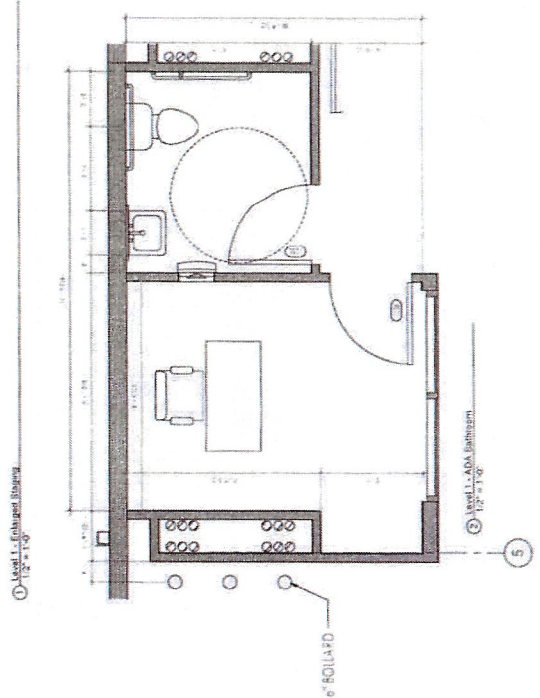
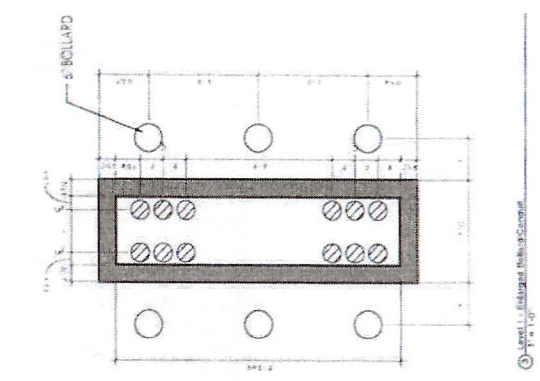
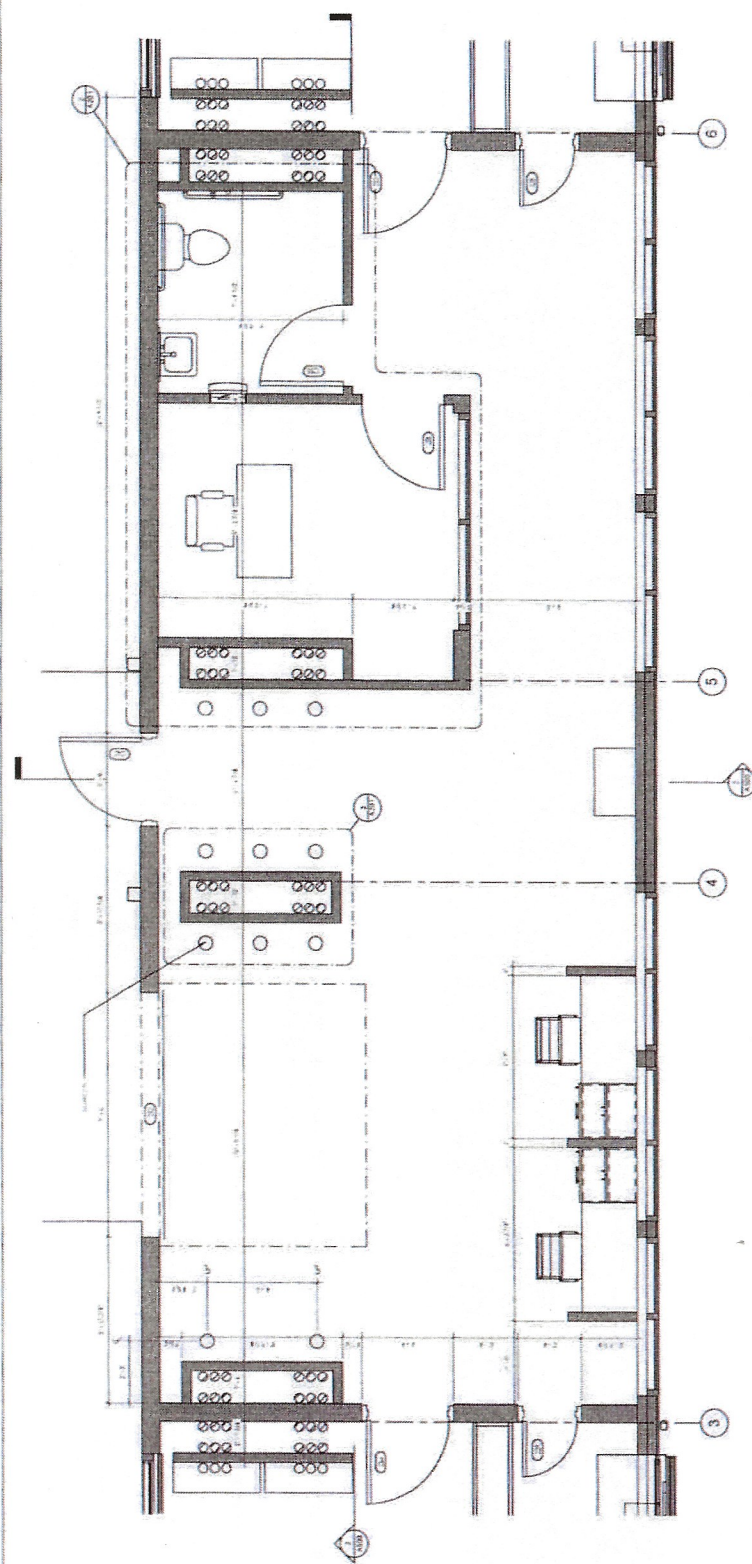
#	Rev	Date



PROJECT NO. 121-0000
DATE: 12/12/10

ENGAGED PLAN
A201

SCALE: AS SHOWN
DRAWN BY: J. HARRIS
CHECKED BY: J. HARRIS



3) Kitchen, 12' x 10'

2) Kitchen, ADA Bathroom, 12' x 10'

1) Kitchen, 12' x 10'



K&K ARCHITECTURE, INC.
6100 CHERRYWOOD DRIVE, SUITE 100
MAYSVILLE, GA 30558
www.kandk.com / 404.442.2225

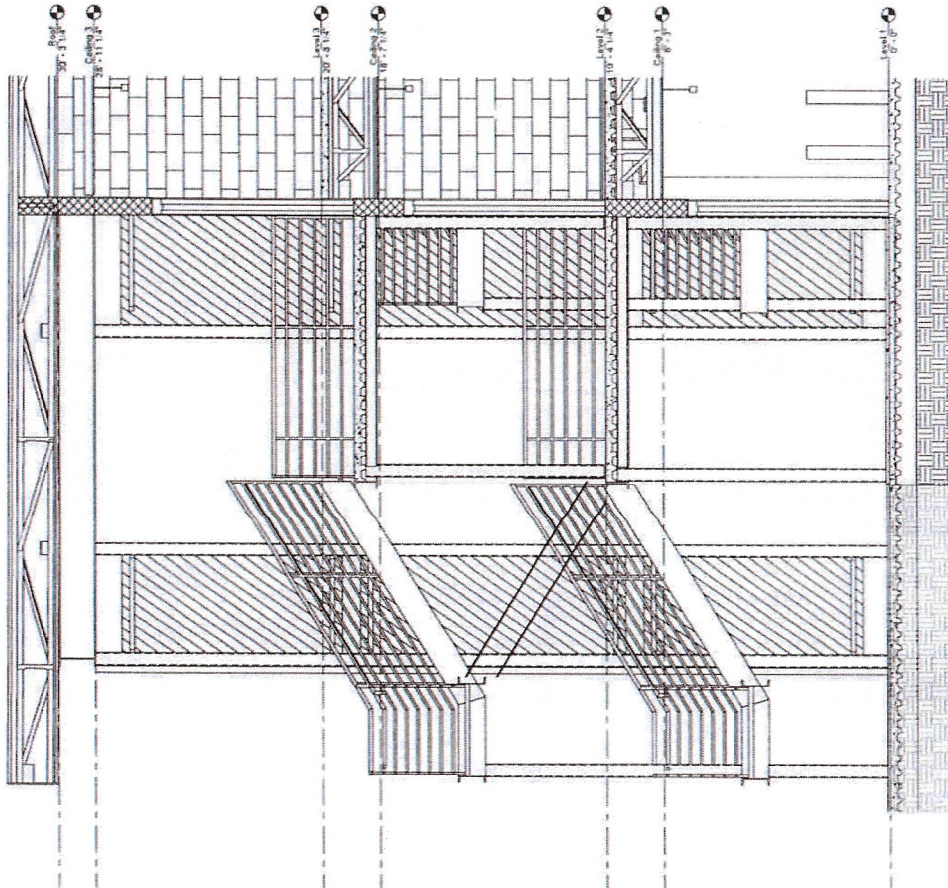
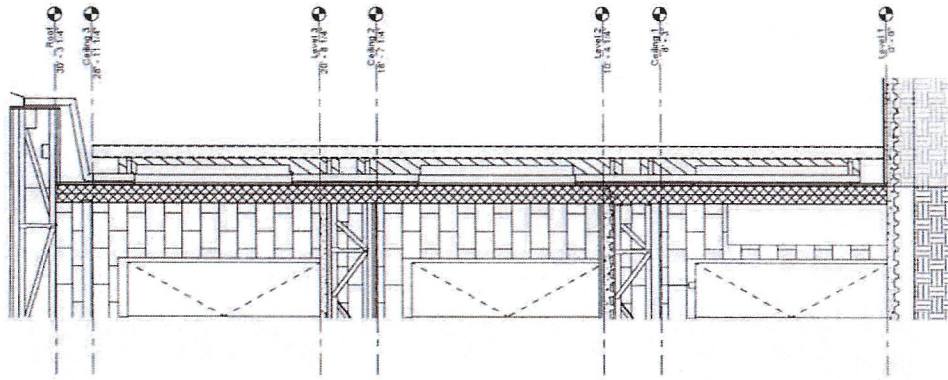
NORTHERN DATA PHASE III 121 Industrial Drive Maysville, GA 30558

#	REV	Date



SECTION 210
Structural Detail
A 601

SECTION 210
Structural Detail
A 601



Section 2, Cabinet 2
1/8" = 1'-0"

Section 2, Cabinet 1
1/8" = 1'-0"



LAMON ARCHITECTS PC
45 W. Constance St. Suite 1114
Atlanta, GA 30308
www.lamonarchitects.com / 404.421.2222

NORTHERN DATA PHASE III

121 Industrial Drive Maysville,
GA 30558

PROJECT NO. 121-IND-001
DATE: 08/14/14
DRAWN BY: J. HARRIS
CHECKED BY: J. HARRIS
SCALE: AS SHOWN

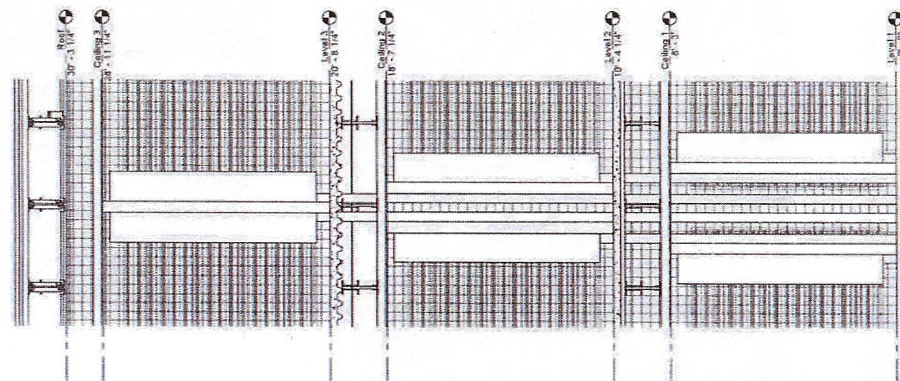
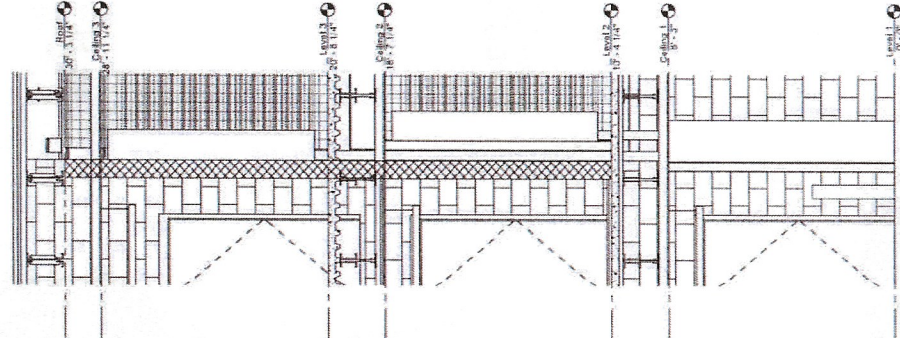
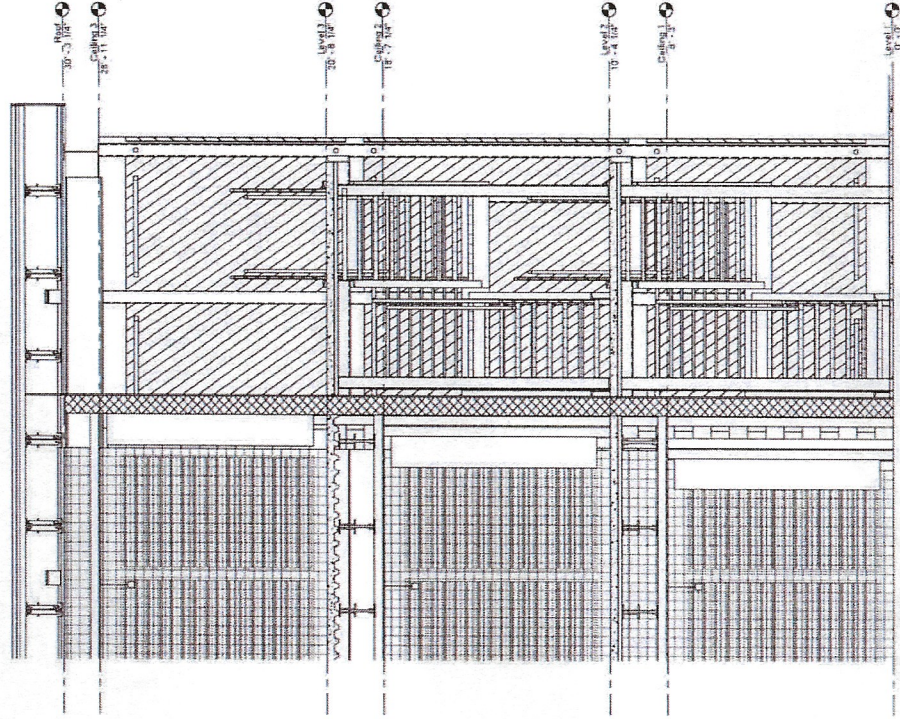
#	Rev	Date



PROJECT NO. 121-IND-001
DATE: 08/14/14
DRAWN BY: J. HARRIS
CHECKED BY: J. HARRIS
SCALE: AS SHOWN

SECTION: CORNER
A 602

DATE: 08/14/14
DRAWN BY: J. HARRIS
CHECKED BY: J. HARRIS
SCALE: AS SHOWN

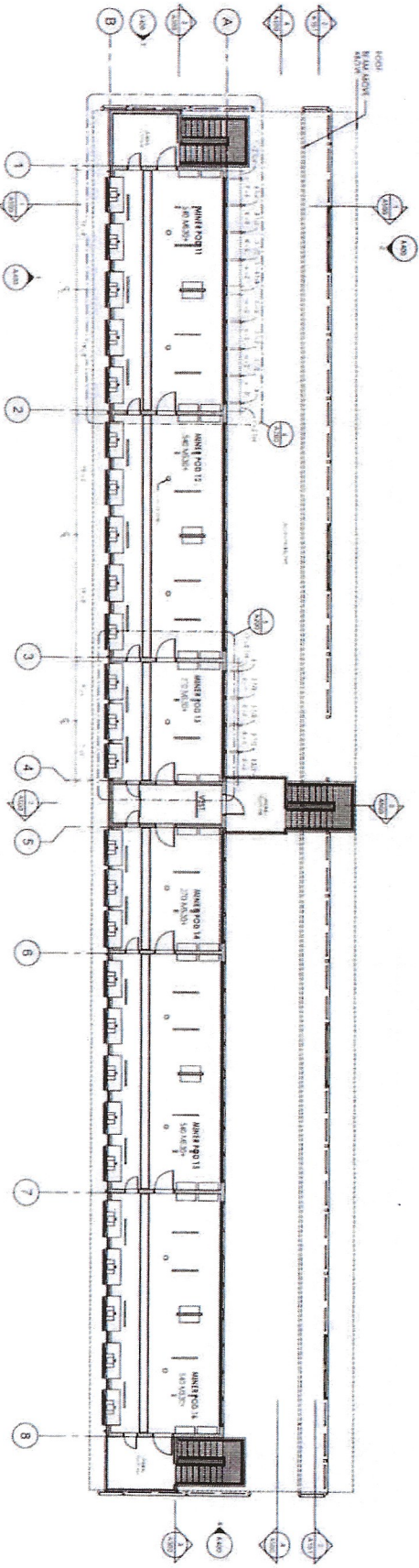


1 Section 3, Corner 2
1/2" = 1'-0"

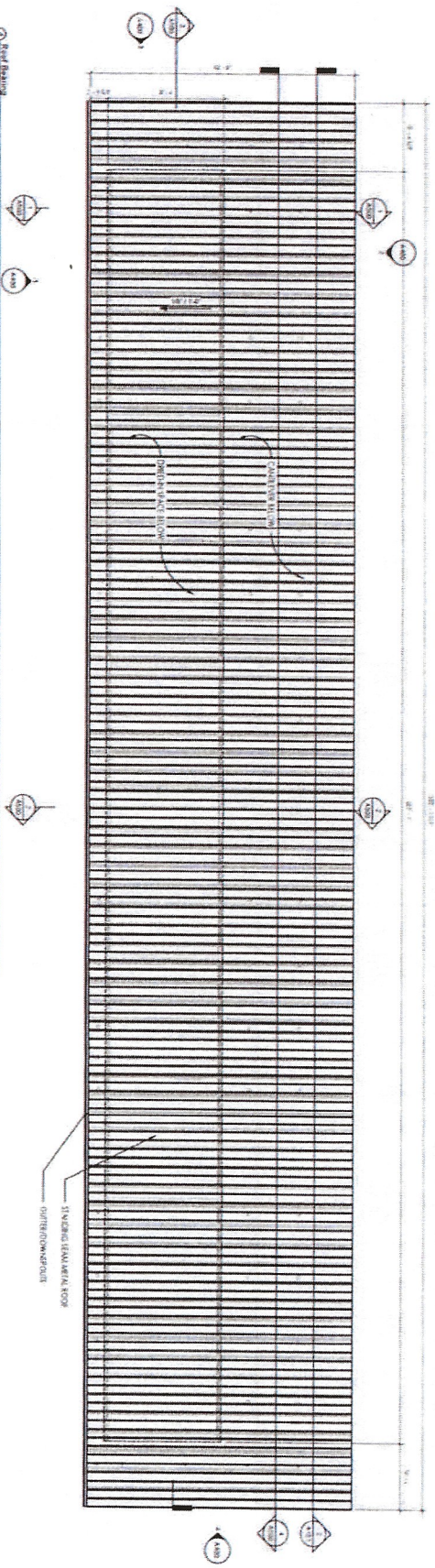
2 Section 3, Corner 2
1/2" = 1'-0"

3 Section 3, Corner 1
1/2" = 1'-0"

Level 3
2700 MS30 MINERS @ LEVEL 3



Level 3
2700 MS30 MINERS @ LEVEL 3



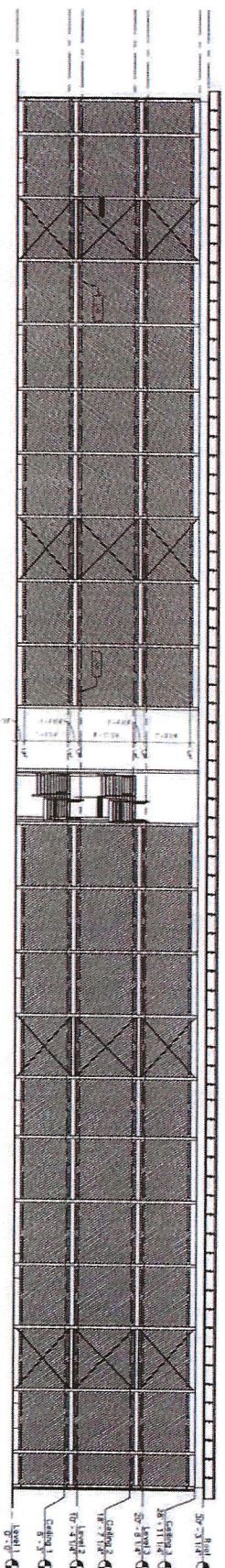
#	REV	DATE

2700 MS30 MINERS @ LEVEL 3
 A101
 121 INDUSTRIAL DRIVE
 MAYSVILLE, GA 30558
 770.427.2222

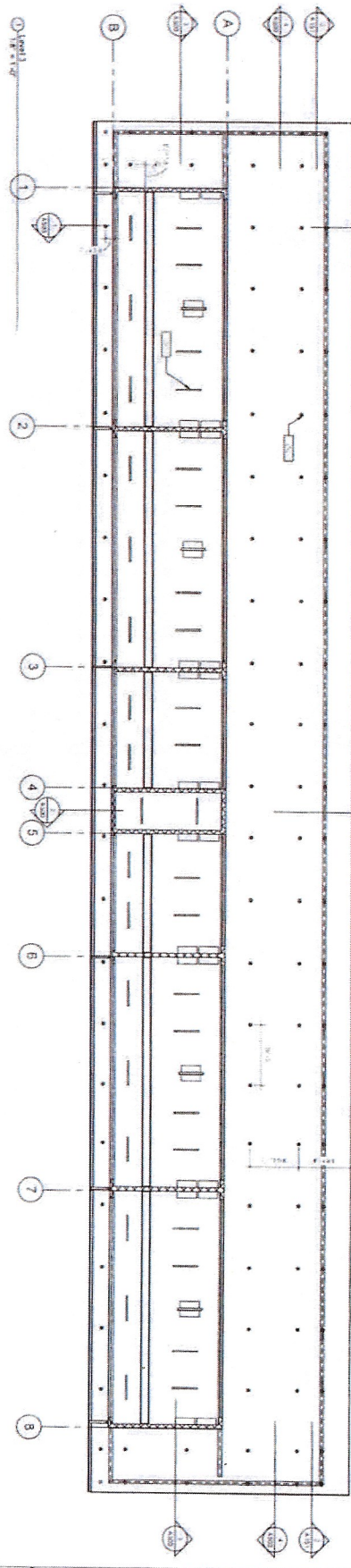
NORTHERN DATA PHASE III
 121 Industrial Drive Maysville, GA 30558

LINDA ALLEN & ASSOCIATES, INC.
 121 INDUSTRIAL DRIVE, SUITE 300
 MAYSVILLE, GA 30558
 770.427.2222





① Northern Building - Green Wall
18-1139



NORTHERN DATA PHASE III
121 Industrial Drive Maysville, GA 30558

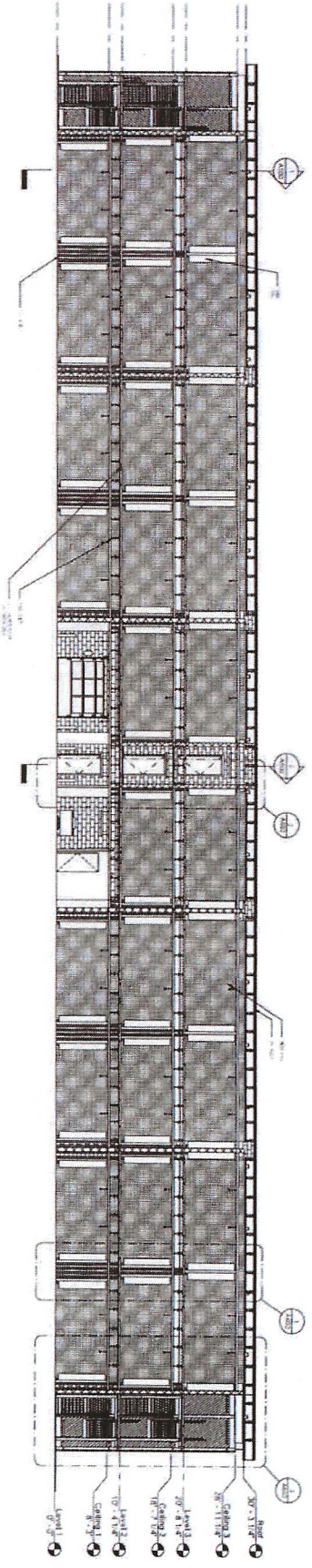
LARSON ARCHITECTS INC.
45 W. CENTER STREET, SUITE 200
MAYSVILLE, GA 30558
WWW.LARSONARCH.COM / 770.425.3225



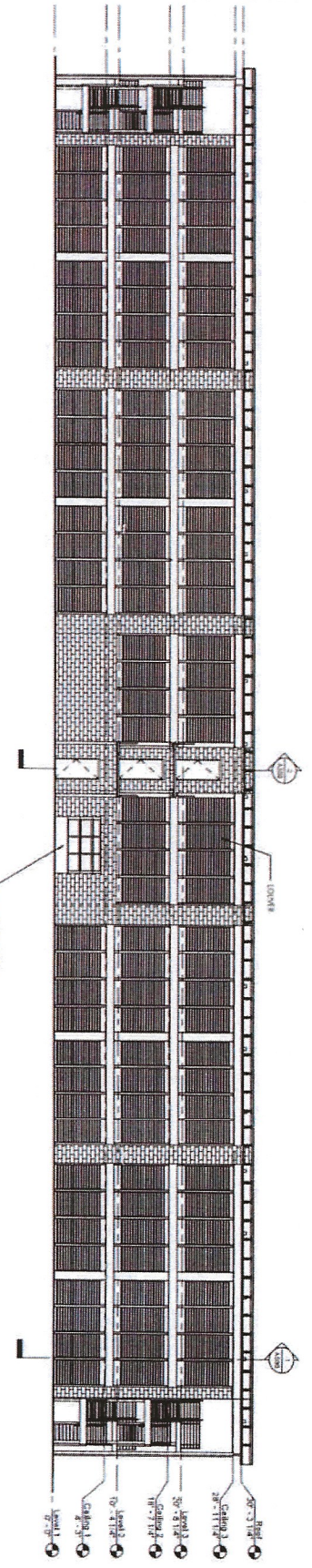
#	REV	DATE

NOI
A151

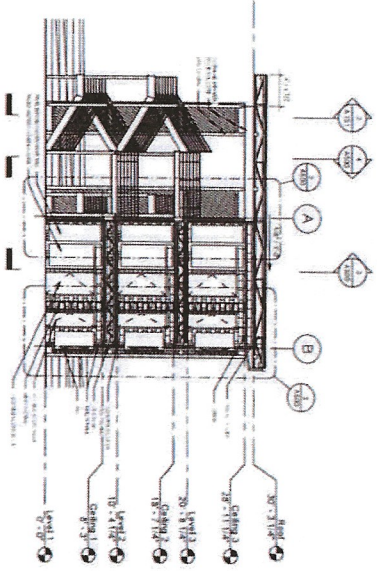
① Section 1
1/8" = 1'-0"



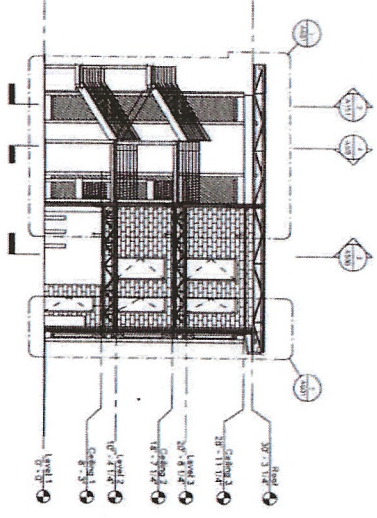
② Section 1
1/8" = 1'-0"



③ Section 1
1/8" = 1'-0"



④ Section 2
1/8" = 1'-0"



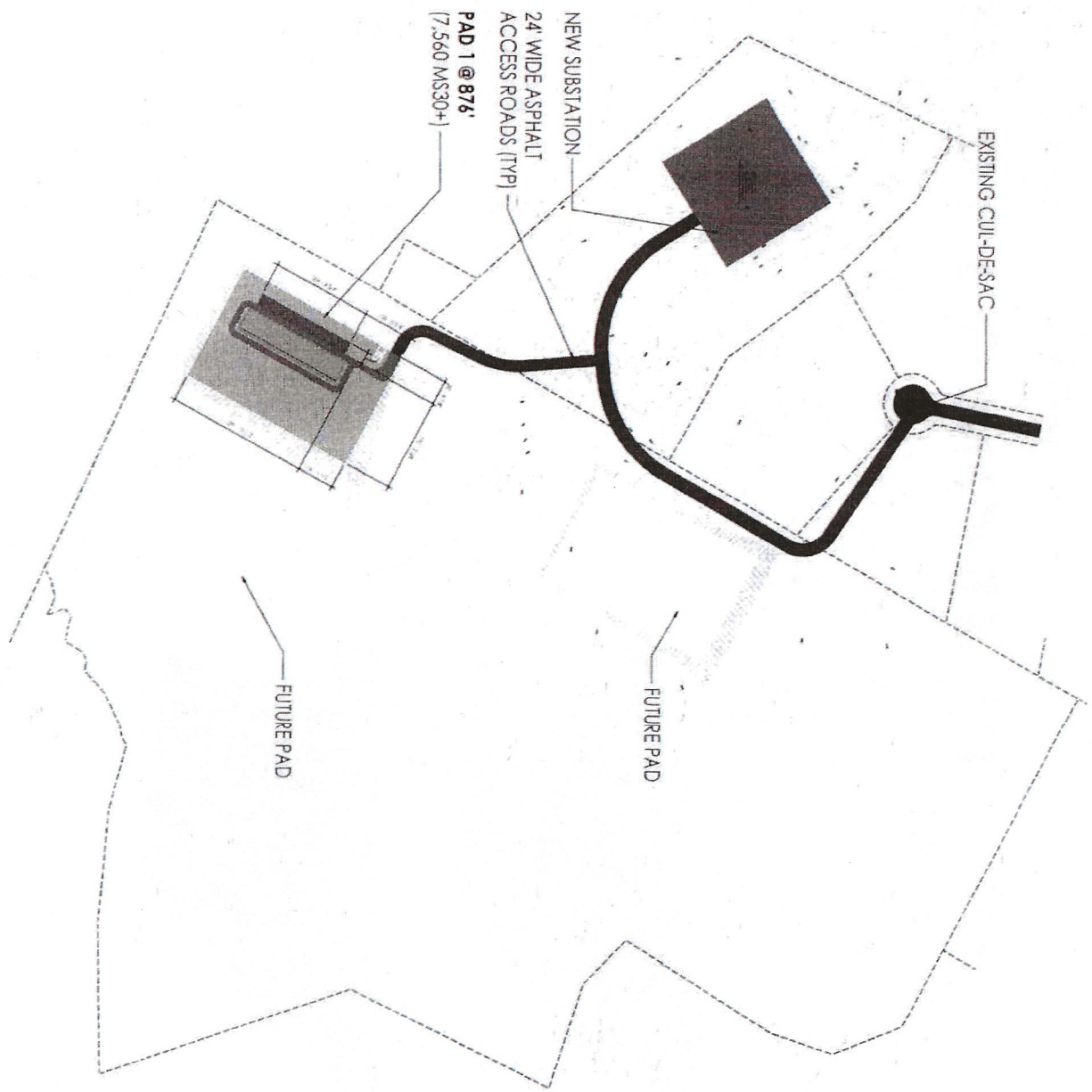
<p>Scale: 1/8" = 1'-0"</p> <p>A500</p>		#	REV	DATE

NORTHERN DATA PHASE III
 121 Industrial Drive Maysville, GA 30558

KLING STUBBINS
 415 North 10th Street
 Savannah, GA 31401
 www.klingstubbins.com / 770.427.2222



© 2004 K&K Associates, Inc.



NORTHERN DATA PHASE III
121 Industrial Drive Maysville, GA 30558



K&K ASSOCIATES, INC.
121 Industrial Drive
Maysville, GA 30558
www.k&kassociates.com / 770-424-2225

#	Rev	Date



A001

DATE PLOTTED: 11/11/04
SCALE: AS SHOWN
DRAWN BY: J. W. BROWN
CHECKED BY: J. W. BROWN
APPROVED BY: J. W. BROWN